

Department of Civil Engineering – David Livingstone Centre for Sustainability

IMPLEMENTATION OF THE STOCKHOLM CONVENTION ON PERSISTENT ORGANIC POLLUTANTS (POPs) – PRACTICAL ASPECTS

The David Livingstone Centre for Sustainability (DLCS), in collaboration with the United Nations Industrial Development Organisation (UNIDO), offers a high level professional development opportunity in the Implementation of the Stockholm Convention on POPs.



This two-week course provides an introduction to the current best practice in the identification and treatment of proscribed chemicals, including those proposed in the Conference of the Parties for the next expansion of the POPs list. Participants will also gain an understanding of the requirements for monitoring and reporting and an introduction to the techniques of remediation of contamination.

There is an option to attend single days of the course for specific topics, such as Endocrine Disruptors or Remediation Technologies.

The Stockholm Convention

The Stockholm Convention is a global treaty to protect human health and the environment from POPs. These chemicals remain intact in the environment for long periods, become widely distributed geographically through transboundary movement, accumulate in the fatty tissue of living organisms and are toxic to humans and wildlife. POPs circulate globally, therefore localised intervention has little overall impact but they pose high risk if they enter the food chain. Hence concerted global action is necessary to minimise their effect on humans and the environment.

Over 150 countries signed the Convention, requiring them to take measures to eliminate or heavily restrict the production and use of POP pesticides and PCBs, and to reduce or eliminate the unintentional production and release of POPs, namely dioxins, furans, PCBs and HCBs. National and local governments, environmental authorities and private industry are all affected by the Convention at policy and operational levels.

Key Knowledge

This course provides an introduction to the requirements of the Convention and an explanation of the practical steps necessary for compliance. This includes lectures and seminars on current best practice in site investigation and remediation, site visits and laboratory demonstrations. Single day options are available in each of the following topics:

- Overview of the Stockholm Convention
- Remediation Technologies
- Air Sampling
- Risk Assessment and Site Investigation
- Endocrine Disruptors

Course Content

Week 1: Practical Environmental Assessment

- Introduction to the Stockholm Convention
- Introduction to Site Investigation
- Risk Assessment
- Soil, Groundwater and Air Sampling
- Remediation Technologies
- Field Trips
 - Site Investigation
 - Site Remediation
 - Sampling

Week 2: Environmental & Analytical Procedures

- Quality Assurance & Accreditation of Laboratories
- Standard Methods of Analysis
- Endocrine Disruptors and POPs in the Environment
- Computer Workshop Modelling the Environmental Fate of POPs
- Demonstrations
 - Sampling and Extraction Techniques
 - Analytical Techniques

Who should attend?

This course is intended for professionals working in the areas of:

- Environmental Health
- Environmental Protection
- Environmental Legislation and Regulation
- Environmental Consultancy
- Contaminated Land and Sediments
- Water
- Waste Treatment
- Construction Sector
- Industrial Development

The course is also open to postgraduate students of DLCS programmes.

Course Tutors

Professor Robert Kalin

Chartered Environmentalist (CEnv) and a Fellow of the Institution of Civil Engineers (UK), his work includes site specific biogeochemistry of contaminated land and groundwater (including engineering design of sustainable remediation methods) and the development of new enhanced in-situ remediation methods that manage long-term risk.

Dr Helen Keenan

Member of Royal Society of Chemistry, Chartered Chemist, Chartered Scientist, her work involves monitoring, analysis and fate determination of POPs. She is a consultant to :UNIDO for implementation of the Stockholm Convention in East & S.E Asia.1

Postgraduate Courses Offered by the Department

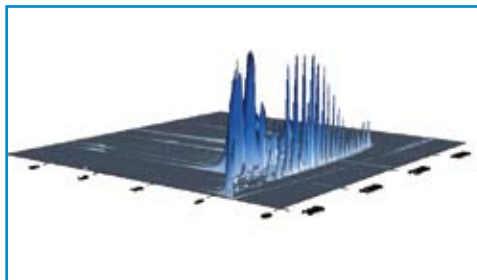
The Department has a wide range of exciting environmental courses (available one year full-time or two years part-time). Throughout the EU and worldwide there is now a focus on environmental issues which makes these degrees particularly relevant. The courses already involve extensive industrial collaboration and further partnerships with companies, government agencies and NGOs are being developed.

- MSc Environmental Engineering
- MSc Environmental Entrepreneurship
- MSc Environmental Forensics
- MSc Environmental Health
- MSc Environmental Science*
- MSc Environmental Studies
- MSc Geotechnics*
- MSc Global Water Sustainability*
- MSc Science, Technology & Sustainability
- MRes Geo-Environmental Engineering
- MRes Integrated Pollution Prevention & Control (IPPC)
- MRes Sustainable Construction & Infrastructure

* A joint degree between the Universities of Strathclyde and Glasgow



Participation in this course will count towards the requirements of the Royal Environmental Health Institute of Scotland (REHIS) scheme of continuing professional development.



3-D chromatogram from contaminated sample

Civil Engineering & the University of Strathclyde

David Livingstone Centre for Sustainability

Civil Engineering at Strathclyde is one of the first departments in the UK to fully embrace the importance of the environment in today's world. It is a forward-looking department with strong links to industry and public bodies. These links are integral to our approach to research and education, providing our students with valuable contacts outside the world of academia. The Department is one of the main providers of graduates in Civil Engineering and Environmental Health in Scotland.

The Department is the main sponsor for the David Livingstone Centre for Sustainability (DLCS), which has an outstanding international record in environmental capacity building. For example, our staff have worked with government agencies in Europe, Asia and Africa to develop professional capabilities in the detection, management and legislation of environmental pollutants.

Glasgow

The University is located in the heart of Glasgow, the UK's fourth largest city. Glasgow is one of the liveliest cities you'll ever experience. It is famous for its shopping, vibrant music scene and brilliant nightlife, as well as its cultural and architectural heritage. Just beyond the city of Glasgow lies some of Scotland's most beautiful scenery. The local area is rich in history and heritage and the Trossachs, the Highlands and the Borders are easily accessible.

Dates & Times

Week 1: 31 August - 4 September 2009

Week 2: 7 - 11 September 2009

Venue

David Livingstone Centre for Sustainability
University of Strathclyde
Graham Hills Building, Level 6
50 Richmond Street
Glasgow G1 1XN
t: +44 (0)141 548 3902
e: cpd-pops@strath.ac.uk

Fees

Week 1: Practical Environmental Assessment
– £1,450

Week 2: Environmental & Analytical Procedures
– £1,450

Weeks 1 & 2: £2,400

One Day Options: £295

Discounted Fees (for students registered on DLCS Master's Programmes): £500 per week

Note: cancelled bookings will be subject to an administration fee of £100.

Accommodation

University accommodation is available within the John Anderson Campus. For details see www.rescat.strath.ac.uk/accommodation.html
Hotel accommodation is also available nearby. For information see www.seeglasgow.com

How to Apply

To request a place on this course, please complete the online registration form at www.strath.ac.uk/dlcs/cpd-pops