

Basic indicators

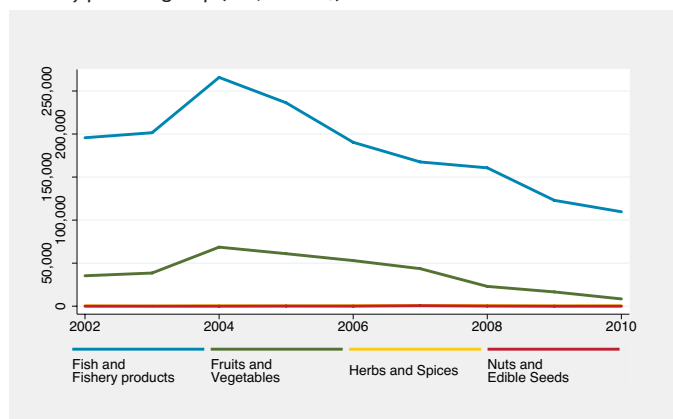
Population (2011)	29,278,000	Share of food exports in total exports (% 2010)	0.35
Rural population (% total population)	6.5	Rank as world exporter for:	
GDP (millions current US\$, 2011)	316,482	Total food products	122
Agriculture (% share in total GDP, 2011)	5.79	Fish and Fishery products	76
GDP per capita (US\$):	10,810	Fruits and Vegetables	130
World Bank income group:	UMIC	Rank as food products exporter to:	
Human Development Index 2012 ranking	71	Australia	122
Poverty headcount ratio, US\$1.25/day (% of population)	6.63 (2006)	European Union	75
Employment in agriculture (% of total employment)	8	Japan	69
Female employees, agriculture (% female employment)	1.80 (2010)	United States	78

Main export markets (% share of export value, 2010)

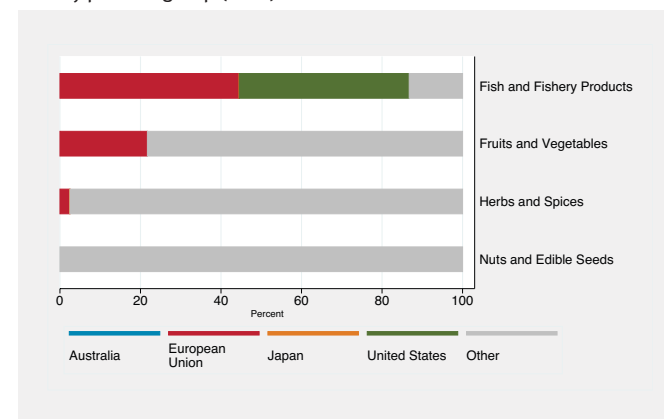
By product group:			
All food products	EU		47.53
	USA		26.08
	Japan		6.24
Fish and Fishery Products	EU		44.50
	USA		42.19
Fruits and Vegetables	Mexico		5.07
	EU		47.68
	Aruba		40.19
	Colombia		6.62

Food Trade Patterns and Performance

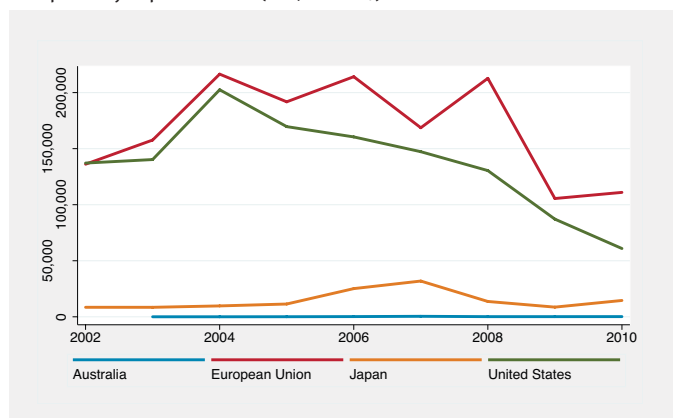
Export value to the world by product group (in 1,000US\$)



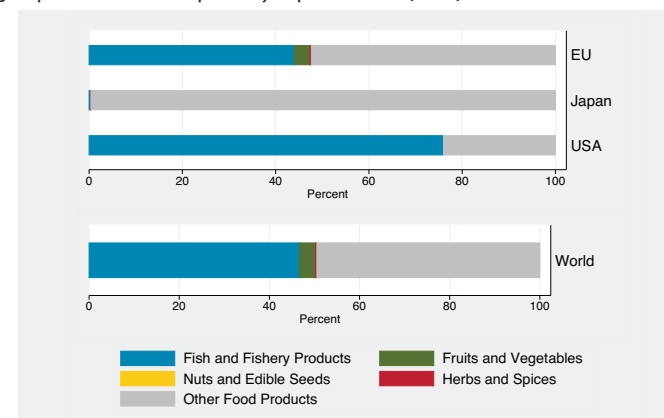
Share of export markets by product group (2010)



Value of food product exports by export market (in 1,000US\$)



Share of product groups in total food exports by export market (2010)



Trade Standards Compliance Performance – Rejection Analysis: All Food Products

Number of food product import rejections (2006 – 2010)							
Importing country	Year					Total	Annual average
	2006	2007	2008	2009	2010		
Australia	0	0	0	0	0	0	0
European Union	3	0	0	0	0	3	1
Japan	3	4	7	3	8	25	5
United States	11	36	21	34	38	140	28
Total	17	40	28	37	46	168	34

Indicator definitions and data sources

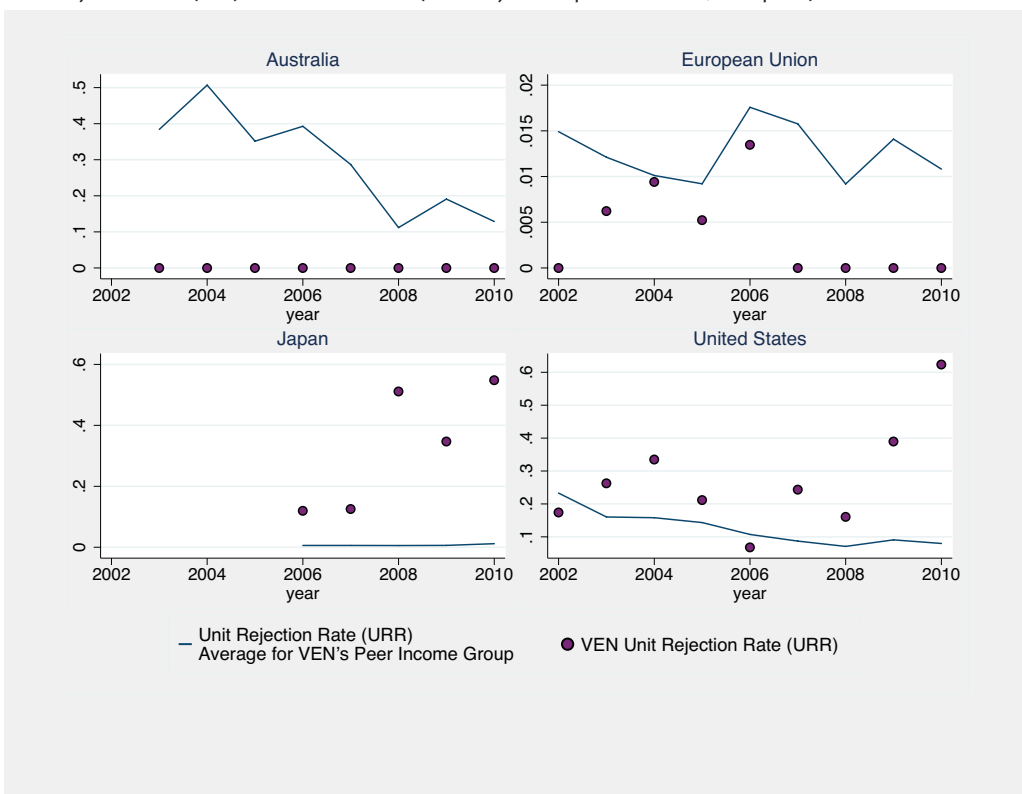
Unit Rejection Rate (URR): Number of rejections per US\$ 1 million of exports over the period 2002 to 2010. This measure takes account of changes in the volume of exports such that it provides a direct measure of the rate of non-compliance.

Relative Rejection Rate (RRR) and the Relative Rejection Rate Indicator (RRRI): First, the “relative rejection rate” (RRR) is calculated as the ratio of a country’s share of total rejections in one market to its share of total imports in this market for the entire period (i.e. 2002 to 2010). This ratio is then converted into natural logarithms in order to generate a normal distribution. The natural logarithms are divided into three equal groups to create a tertile distribution. Countries in the highest tertile are labeled ‘high’, those in the middle tertile are labeled ‘medium’, and those in the bottom tertile are labeled ‘low’, reflecting relative poor/medium/good compliance performance.

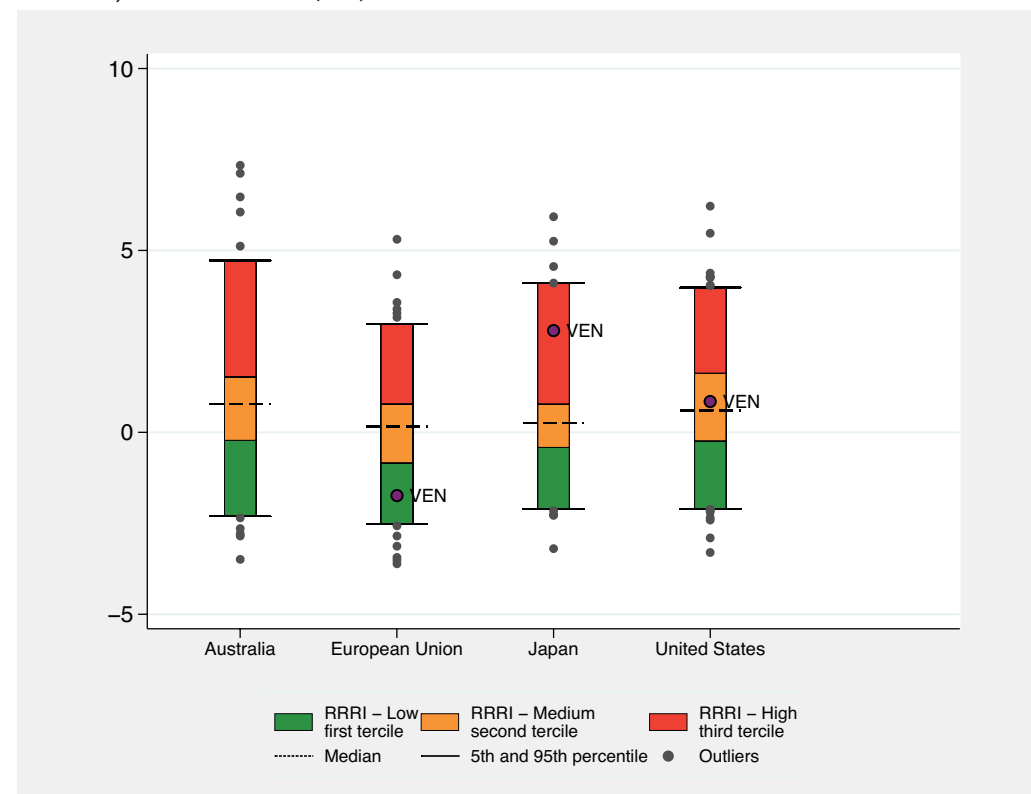
Data sources:

Australian Quarantine and Inspection Service (AQIS) / EU - Directorate General for Health & Consumers (DG SANCO) - Rapid Alert System for Food and Feed (RASFF) / Japanese Ministry of Health, Labor and Welfare (MHLW) / US Food and Drug Administration (FDA) Operational and Administrative System for Import Support (OASIS) database / UN-Comtrade database / World Bank – World Development Indicators (WDI) database / FAO – FAOSTAT database / UNDP – Human Development Reports.

Unit Rejection Rate (URR) - All Food Products (no. of rejections per million US\$ of exports)



Relative Rejection Rate Indicator (RRRI) – All Food Products

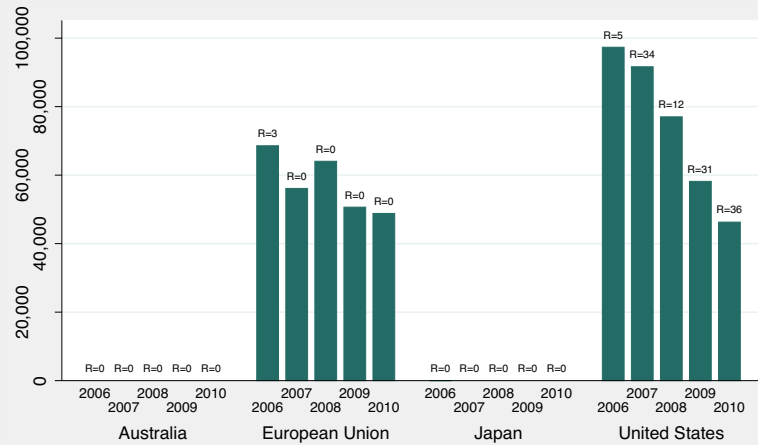




Trade Standards Compliance Performance – Rejection Analysis by Product Group

Fish and Fishery Products

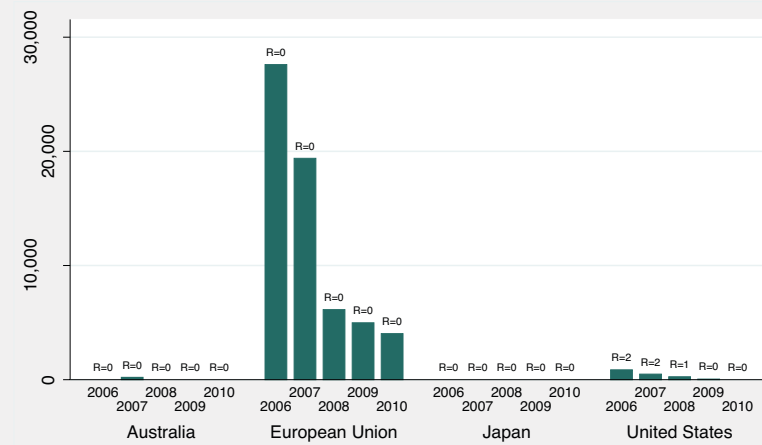
Export Value (in 1,000US\$) and Number of Rejections (2006 – 2010)



R = Number of import rejections

Fruits and Vegetables

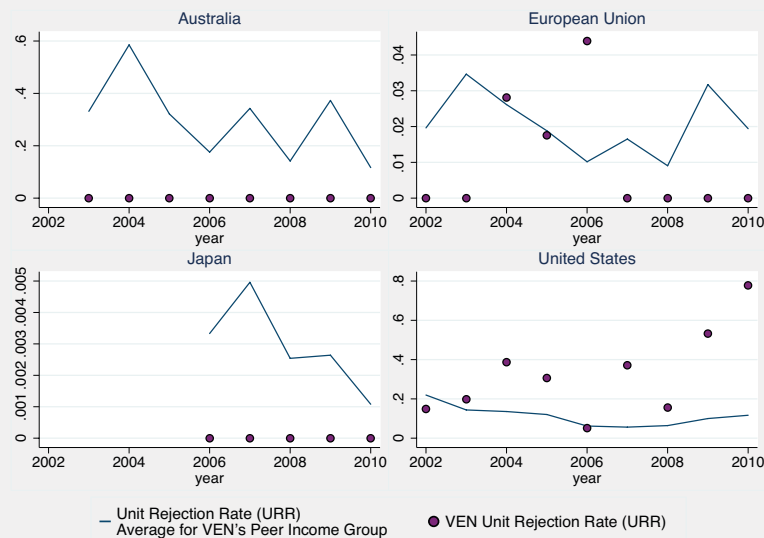
Export Value (in 1,000US\$) and Number of Rejections (2006 – 2010)



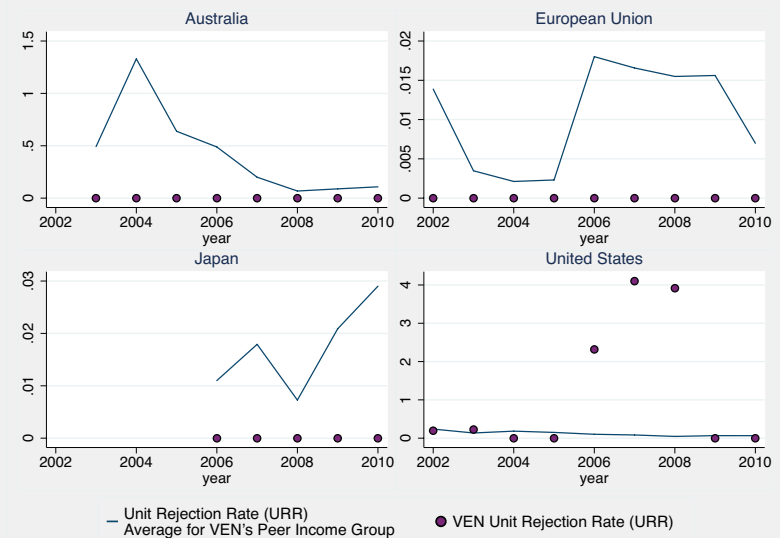
R = Number of import rejections

Unit Rejection Rate (URR) by Product Group (no. of rejections per million US\$ of exports)

Fish and Fishery Products

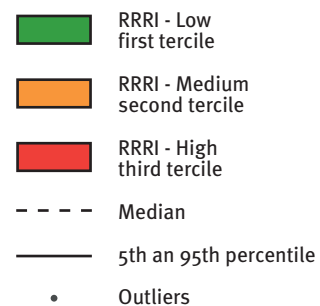
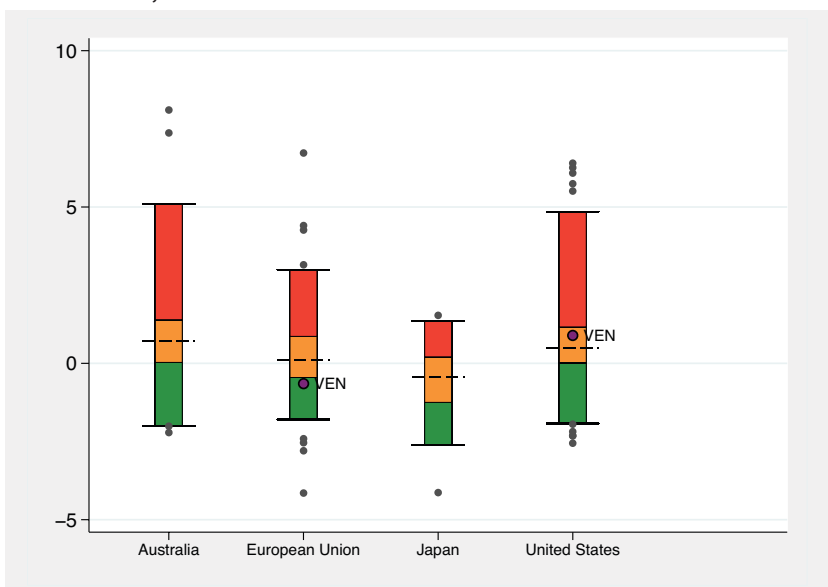


Fruits and Vegetables

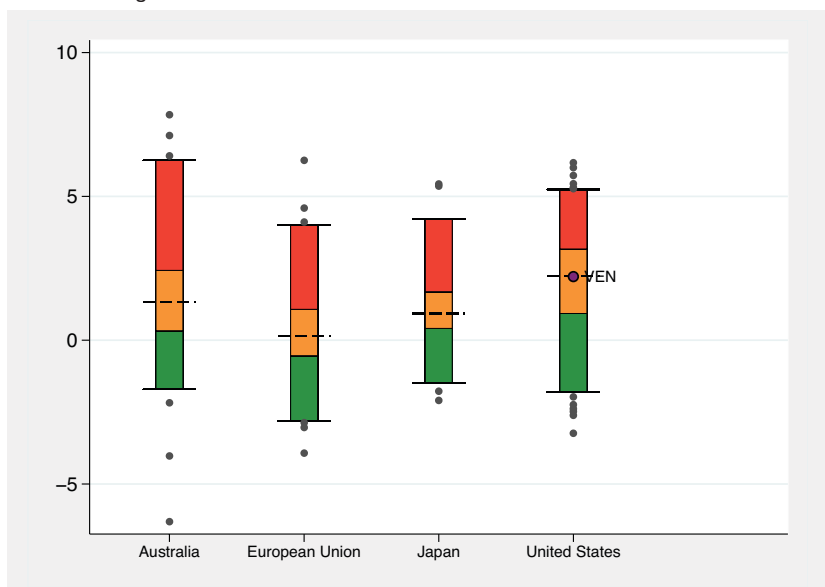


Relative Rejection Rate Indicator (RRRI) by Product Group 2002 – 2010

Fish and Fishery Products

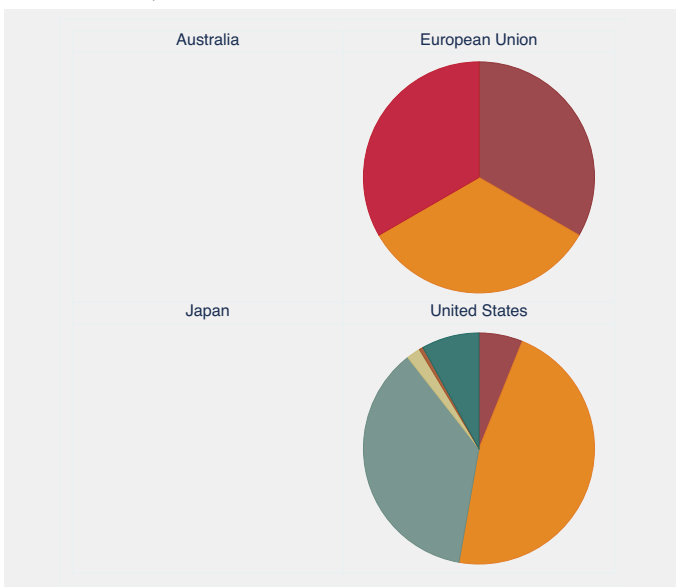


Fruits and Vegetables



Reasons for Rejections by Export Market and Product Group 2002 - 2010

Fish and Fishery Products



Fruits and Vegetables

