



PCP Peer Learning Virtual Session

Country Diagnostic to initiate the PCP Development



Nobuya Haraguchi
2 February 2021





Objectives, tasks and value addition

Objectives: The diagnostic is to identify the most critical bottlenecks and opportunities of a country and to help all stakeholders including government officials, private sector, development partners and UNIDO PCP Team to have a shared understanding on the strategic direction that a country needs to take and on the key constraints to overcome to advance inclusive and sustainable industrial development through the PCP.

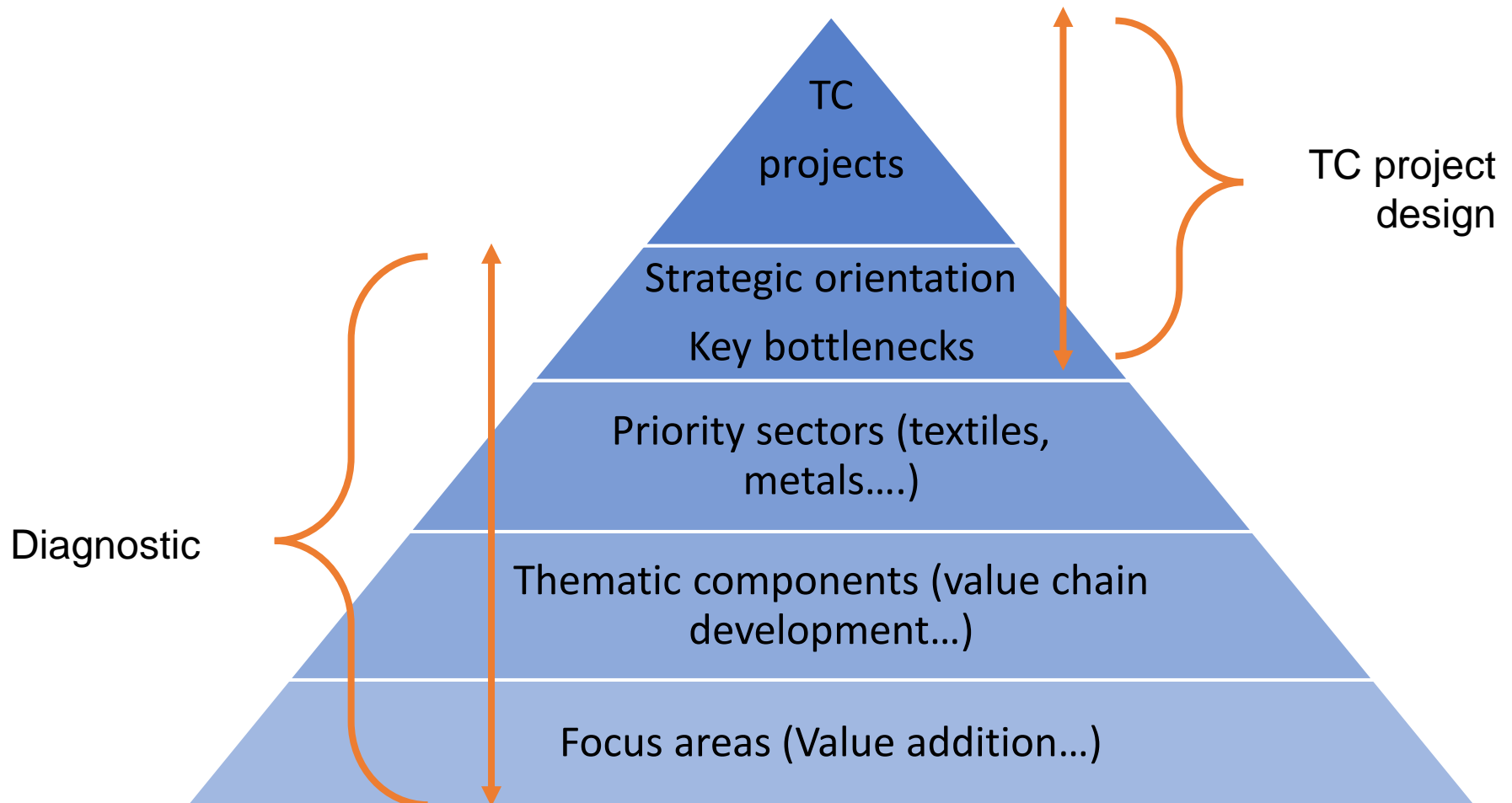
What is PCP diagnostic

- Analysis
- Consensus building

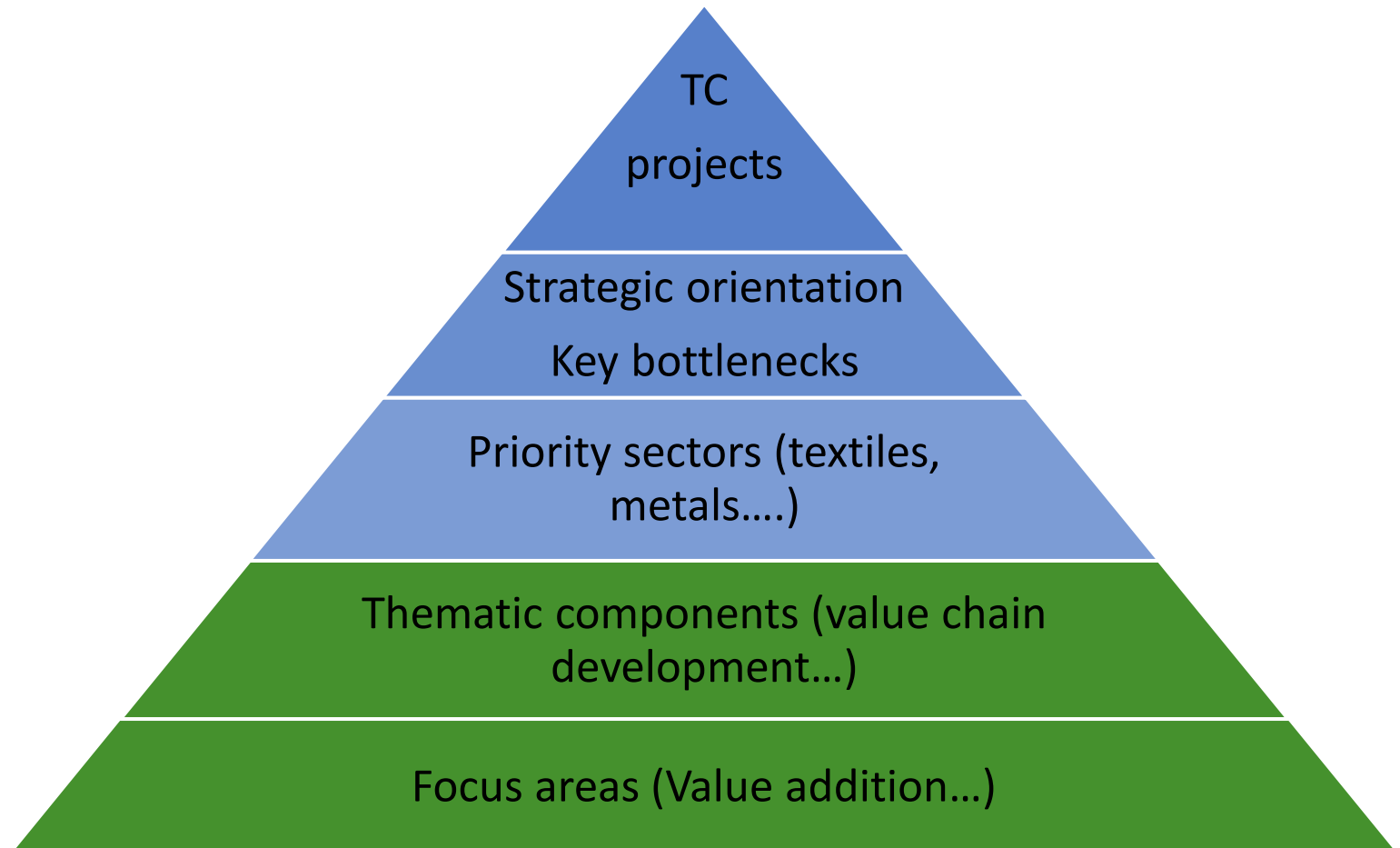
Value addition

- Thematic components and priority sectors
- Benchmarking
- Strategic orientation

PCP programming

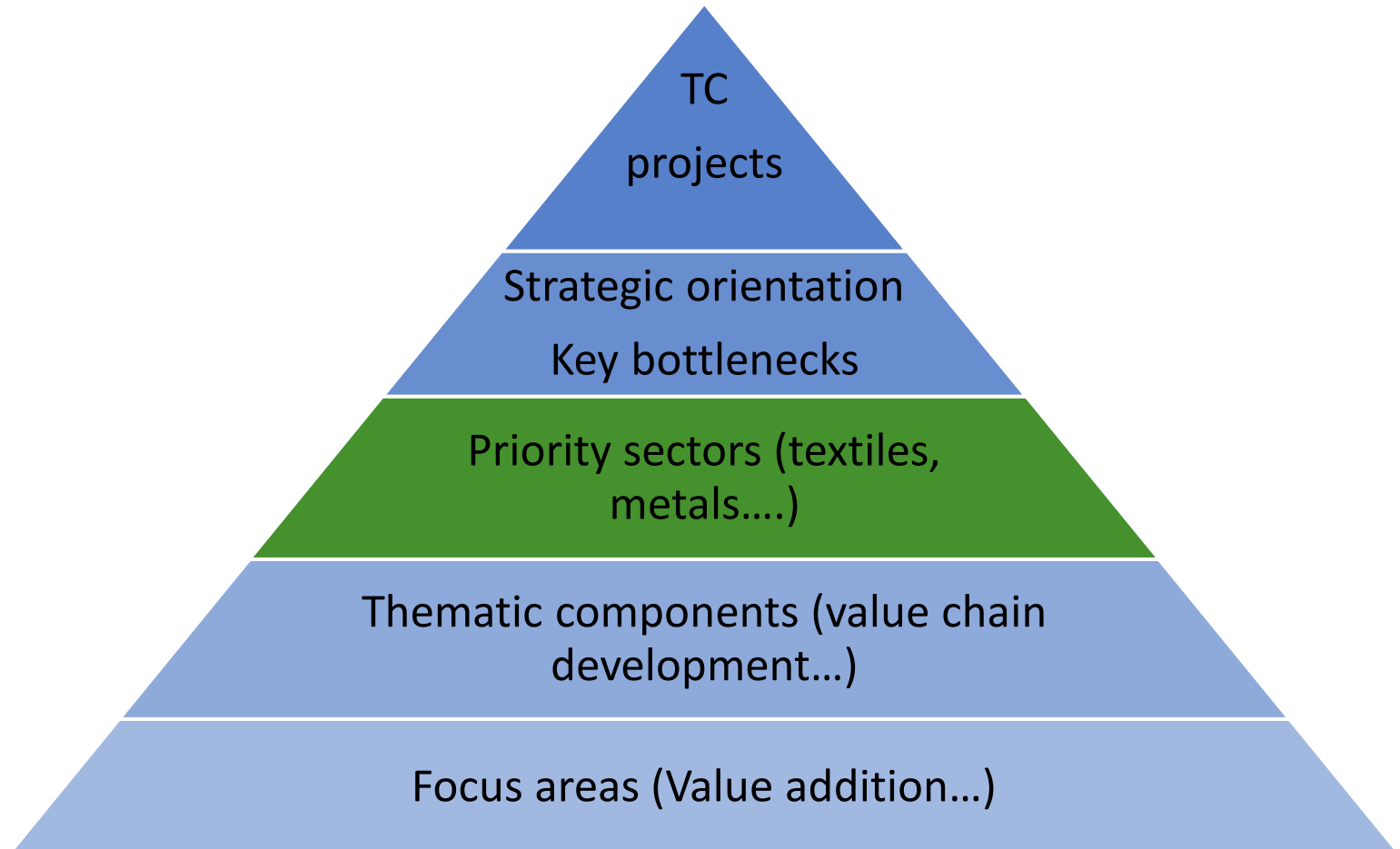


PCP programming



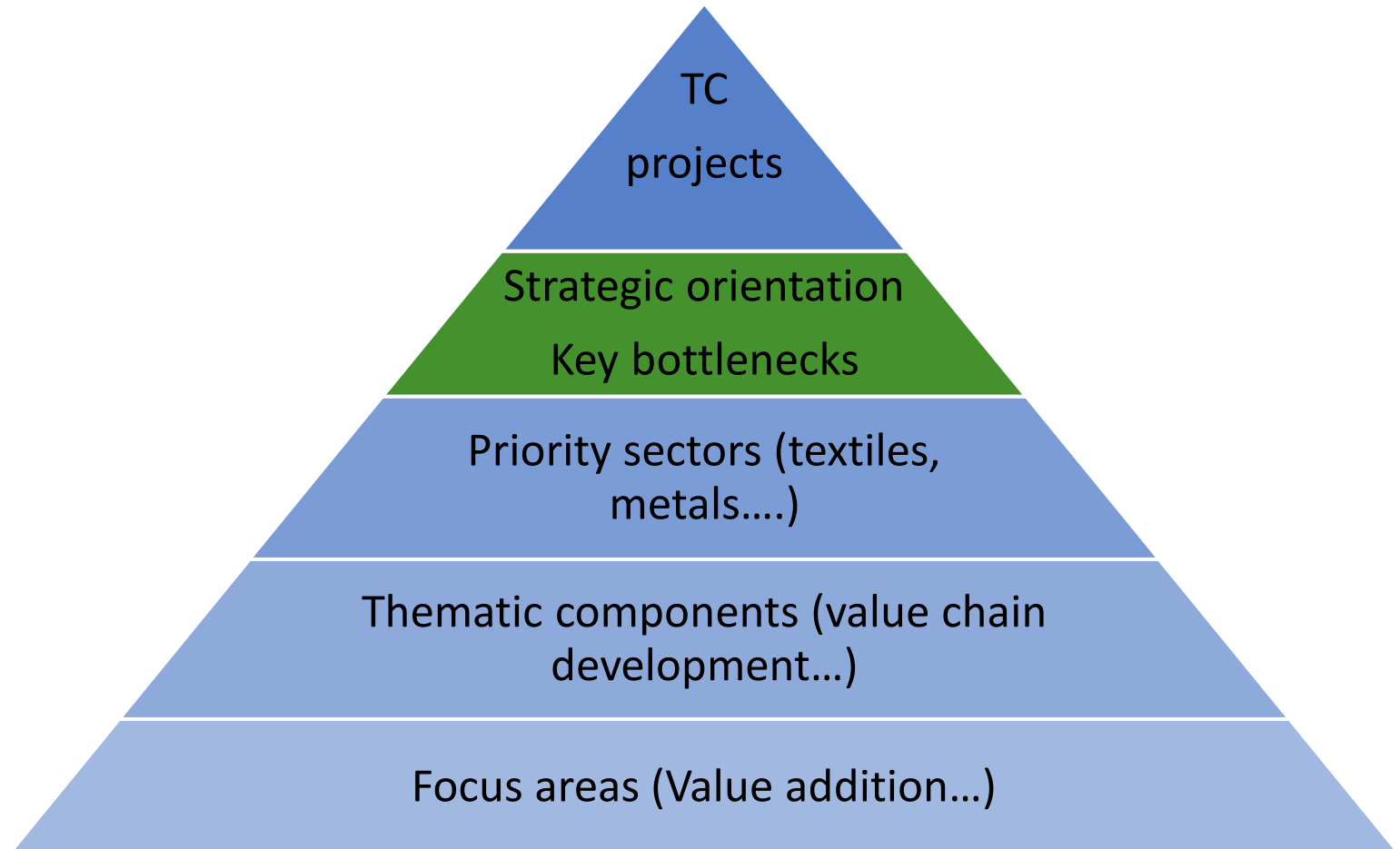


PCP programming

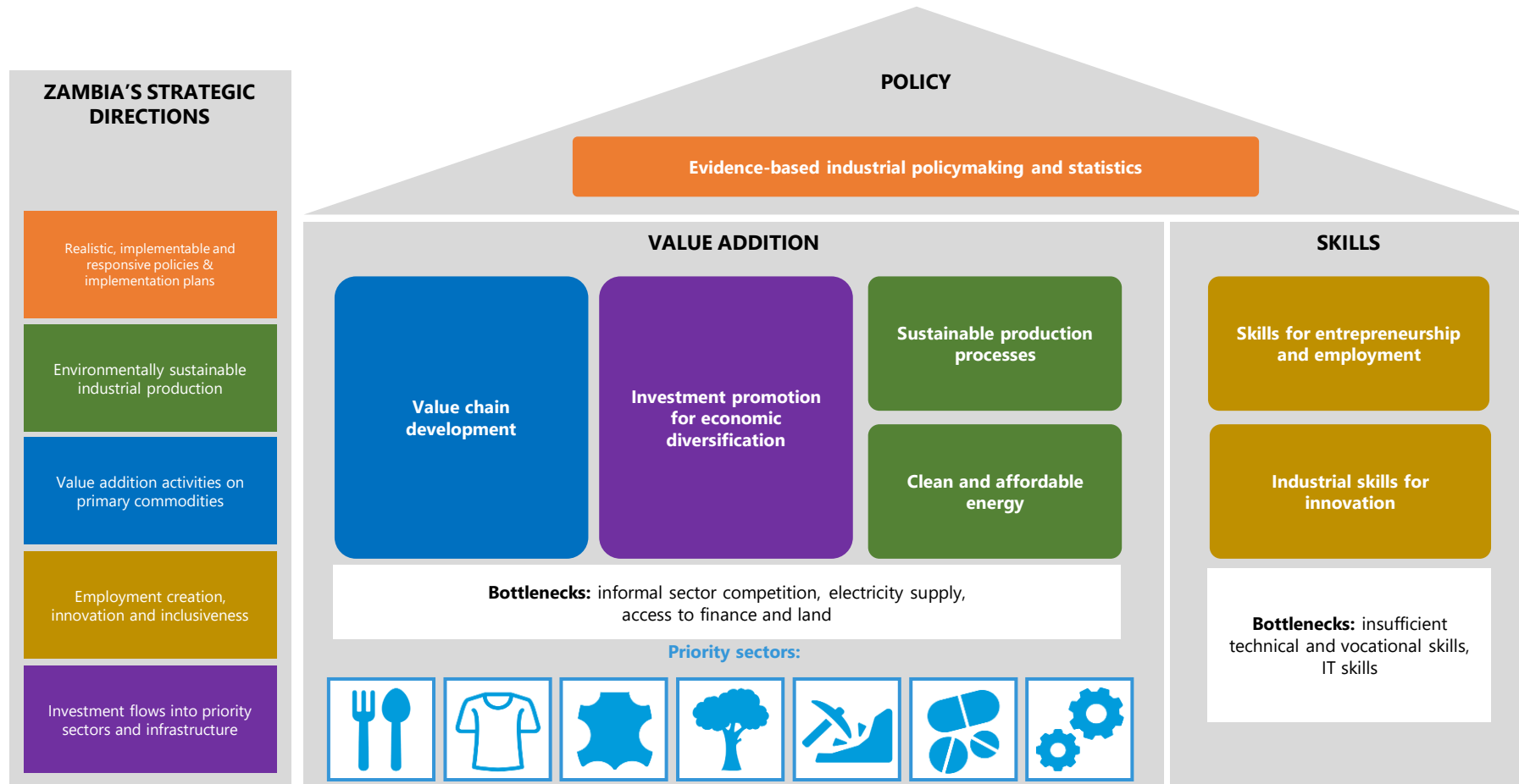




PCP programming



PCP strategic map of Zambia



https://www.unido.org/sites/default/files/files/2020-10/PCP%20Zambia_Industrial%20Diagnostic%20Study%202020.pdf

From the diagnostic Skills for entrepreneurship and employment

- Challenges and opportunities
- UNIDO's comparative advantages
- Potential Partners

OUTCOME	Stronger, more inclusive and more diverse industrial skill base supported by a sustainable industrial skills development infrastructure
OUTPUT 1	Strengthen the technical capacities of workers in priority sectors, with a focus on women and youth
OUTPUT 2	Facilitate the development of the national infrastructure for industrial skills development



Processed
foods



Textiles &
garments



Leather &
leather
products



Wood &
wood
products



Mineral
processing
& products



Pharmaceuticals



Engineering
products

Lessons learned

1. Identified the thematic components and priority sectors and provided validated workable framework on which PCP programmes have been built.
2. Lack of data is often a challenge.
3. Consultation process with stakeholders is the key.
4. Importance of ownership and consensus building



Thank you

